



Click to add text

CSD28
Community Education Council
Superintendent Address

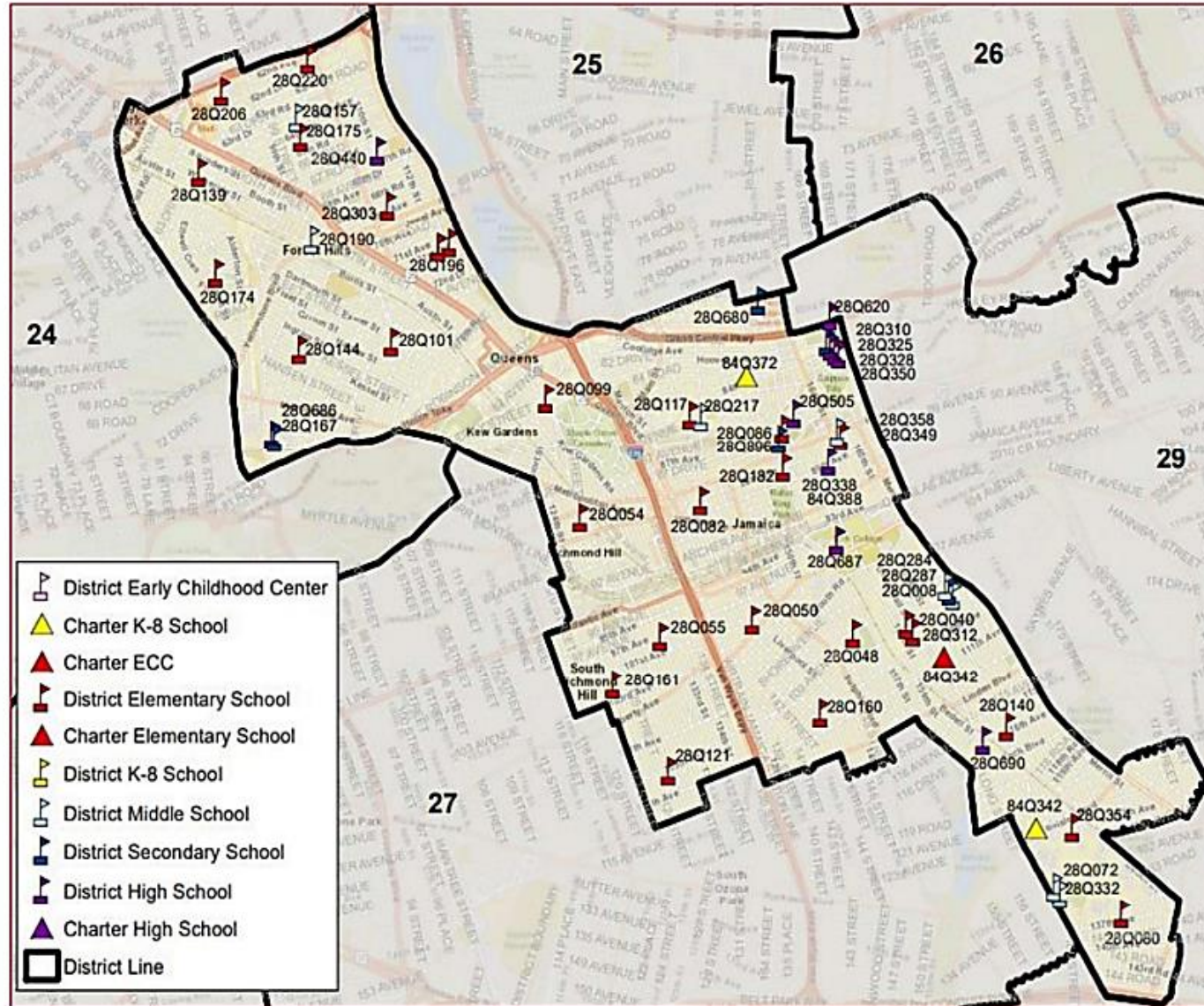
Community School District 28 Schools

Elementary Schools

28Q040	Samuel Huntington
28Q048	David N. Dinkins School
28Q050	Talfourd Lawn Elementary School
28Q054	Hillside Ave. School
28Q055	Magnet School of Communication Arts, Technology and Multimedia
28Q080	Thurgood Marshall Magnet School of Multimedia and Communication
28Q082	Hammond School
28Q086	P.S. 86
28Q099	Kew Gardens School
28Q101	School in the Garden
28Q117	Joyce Keld/Briarwood School
28Q121	P.S. 121
28Q139	Rego Park School
28Q140	Edward K Ellington Magnet
28Q144	Colonel Jeromus Remsen
28Q160	Walter Francis Bishop School
28Q161	Arthur Ashe, Jr. School
28Q174	William Sidney Mount School
28Q175	Lynn Gross Discovery School
28Q182	Samantha Smith School
28Q196	Grand Central Pkwy School
28Q206	Horace Harding School
28Q220	Edward Mandell School
28Q303	The Academy for Excellence through the Arts
28Q312	Jamaica Children's School
28Q349	The Queens School for Leadership & Excellence
28Q354	The Jermaine L. Green STEM Institute of Queens

Middle Schools

28Q008	New Prep Middle School
28Q072	Catherine & Count Basie School
28Q157	Stephen Halsey
28Q190	Russell Sage
28Q217	Green Magnet School Robert Van Wyck Middle School
28Q287	Emerson School
28Q332	Redwood Middle School
28Q358	M.S 358



The Ezra Jack Keats Pre-K Centers

*Q382 153-36 89th Ave. Jamaica, NY

*Q383 132-10 Jamaica Ave. Richmond Hill, NY

*Q608 83-30 Kew Gardens Rd Kew Gardens, NY

Our Vision and Mission stands as a cornerstone for district improvement endeavors. It is anchored in equity and a commitment to ensure every one of our scholars are seen and supported through their 3K to 12 education experience.

Vision

In Community School District 28 we celebrate our differences because we understand that woven into those differences is the knowledge that they offer us unlimited possibility to learn and expand our knowledge of and commitment to all humanity. We are beautifully diverse, coming from countless racial, ethnic, language, and belief backgrounds. We commit to striving for *inestimable contribution* to the lives of our scholars.

Mission

In Community School District 28 we focus on equity as a lever for achievement for every single scholar. We are a district of excellence. We commit to every school maintaining high academic standards. We commit to being a district of learners ensuring that we promote critical thinking rooted in core content conceptual understanding through creative problem solving, technology innovation, social emotional learning, and community advocacy.

Community School District 28

Dr. Tammy Pate, Community Superintendent

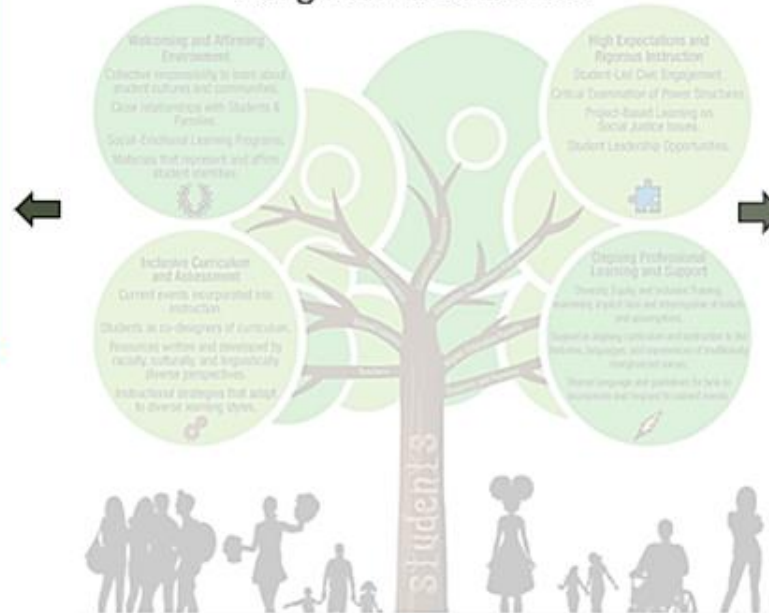
Refocused, Realigned and Revised Priorities and Principles

In CSD28 we focus on equity as a lever for achievement for every single scholar. We are a district of excellence. Beginning with school leaders, teachers, students and community partners we commit to being a district of learners ensuring that we promote critical thinking rooted in core content conceptual understanding through creative problem-solving, technology innovation, social emotional learning and community advocacy.

Progress Monitoring and a Focus on Student Achievement

- District goals all focused on school improvement and progress monitoring
- Revised District Absolutes that focus on evidence of student *engagement* and learning
- Strategic partnerships with NAACP, Teaching Matters, iReady, Momentum, Dell, and local political representatives

To achieve *inestimable contribution* to the lives of our scholars...we commit to being a district of learners



Professional Learning (PL) for ALL Stakeholders

- Bi-Weekly Principal Professional Learning
- Monthly Assistant Principal PL
- Monthly Parent Coordinator PL
- Student Engagement and Participation
- Monthly Family Engagement
- Monthly Equity Team Leads Meeting-Maintaining focus

Chancellor
Priorities &
Principles

SEL & Academic
Screeners

Executive
Superintendent,
District, & School
Goal Alignment

Theory of Action
for District &
School
Improvement

*Pulling the Thread
to High Student
Achievement*



Our Scholars in the News



- **Scholars celebrate Black History Month with Channel 1 News anchor and author Cheryl Wills** https://www.youtube.com/watch?v=j-Y3wX_5G_Q
- **Scholars recognized by channel 11 WPIX for their efforts to uplift and encourage patients at Northwell Hospital** <https://www.northwell.edu/news/in-the-news/drawing-for-chocolate-initiative-supports-forest-hills-039-sick-kids>
- **Two district 28 schools took 1st and 2nd place in the Girls Who Game Minecraft challenge. They used the game to address the following UN Sustainable Development Goal #3: Good Health & Well-being and Goal #17: Partnerships to our community so that all can thrive? How might we re-imagine our own community or create a new one that works for everyone?** <https://www.un.org/sustainabledevelopment/globalpartnerships/>
- **Fourth-grade students appeared on NBC- 4NY/Telemundo Weather Kids Program. Students met virtually for an hour with Meteorologist Raphael Miranda.** <https://www.nbcnewyork.com/on-air/community-top-stories/weather-4-schools/weather-kids-stops-at-ps-86q-in-queens/3538838/>

Our Nationally Certified Magnet Schools

Based on the National Magnet School Standards of Excellence and the five pillars of magnet schools (1. Diversity; 2. Innovative Curriculum and Professional Development; 3. Academic Excellence; 4. Leadership; and, 5. Family and Community Partnerships), the MSA certification process defines and ensures these standards as consistent, essential elements and characteristics of high-quality magnet programs.

District 28 is proud to have the ONLY two nationally certified schools in New York State.



Middle School 358
(Principal Brendan Mims)
Certified in 2020



Public School 349
(Principal Tanya Bates-Howell)
Certified in 2022

Our Attendance Gains

To date our district-wide attendance is at 92% as per Data Hub **UP** from 90% last month (New Visions Portal)



IEP Service Provision Data

SuperintendentName | PATE, TAMMY

Classification	Count	%
Autism	177	5.5%
CSP Awaiting	4	0.1%
Deafness	1	0.0%
Emotional Disturbance	61	1.9%
Hearing Impairment	16	0.5%
Intellectual Disability	36	1.1%
Learning Disability	1041	32.1%
Multiple Disabilities	10	0.3%
Orthopedic Impairment	4	0.1%
Other Health Impairment	300	9.3%
Speech or Language Impairment	1583	48.9%
Traumatic Brain Injury	2	0.1%
Visual Impairment	4	0.1%
Total	3239	100.0%

Receiving Status	Count	Percentage	Citywide
Fully Receiving	2718	93%	82%
Partially Receiving	188	6%	15.8%
Nor Receiving	21	.7%	2.2%
Total	2927	100%	100%

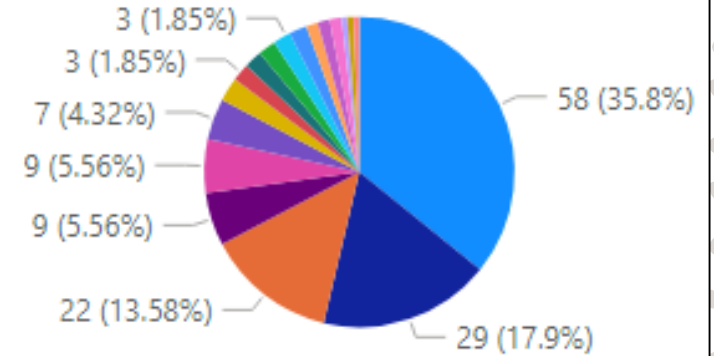
Citywide

Classification	Count	%
Autism	25498	13.9%
CSP Awaiting	353	0.2%
Deaf-Blindness	2	0.0%
Deafness	210	0.1%
Emotional Disturbance	7301	4.0%
Hearing Impairment	1172	0.6%
Intellectual Disability	5302	2.9%
Learning Disability	59928	32.8%
Multiple Disabilities	2645	1.4%
Orthopedic Impairment	492	0.3%
Other Health Impairment	16704	9.1%
Speech or Language Impairment	62933	34.4%
Traumatic Brain Injury	142	0.1%
Visual Impairment	296	0.2%
Total	182978	100.0%

Human Capital Data

Human Capital Data Summary							
# Current Teacher Vacancies (Approved)	# New Teacher Hires	# Teacher Transfers Out	# Teacher Transfers In	# Active Teachers	# Tickets (Last 10 Days)	# Unique Events Attended	# Early Commitments Made at School
0	3		2	33	0	0	0
0	4	1	1	39	0	0	0
0	4	3	0	39	0	0	0
1	4		0	56	0	0	0
0	4	2	1	29	0	0	0
0	3		1	40	0	0	0
13	165	38	33	1,695	0	0	0

New Hires by Certification Area

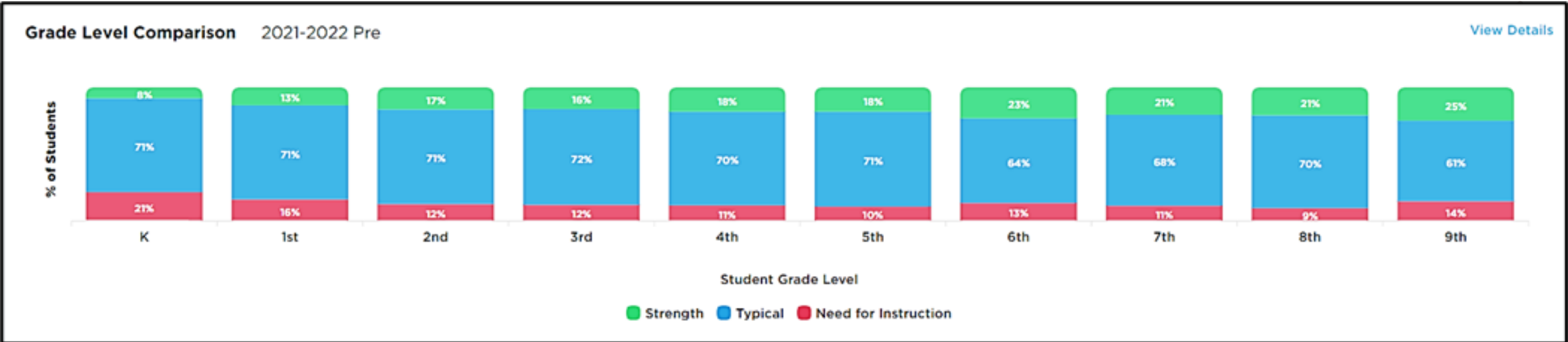


Subject Grouping	New Teacher Hires (Subject Area)
Common Branches	58
Special Education - Primary	29
Early Childhood	22
	9
Special Education - Secondary	9
Math	7
ENL	4
English	3
Physical Education	3
Science - General Science	3
Social Studies	3
Speech Improvement	3
Bilingual Common Branches	2
Other - Perf Arts	2
Other - Reading	2
Art	1
Music	1
Spanish	1

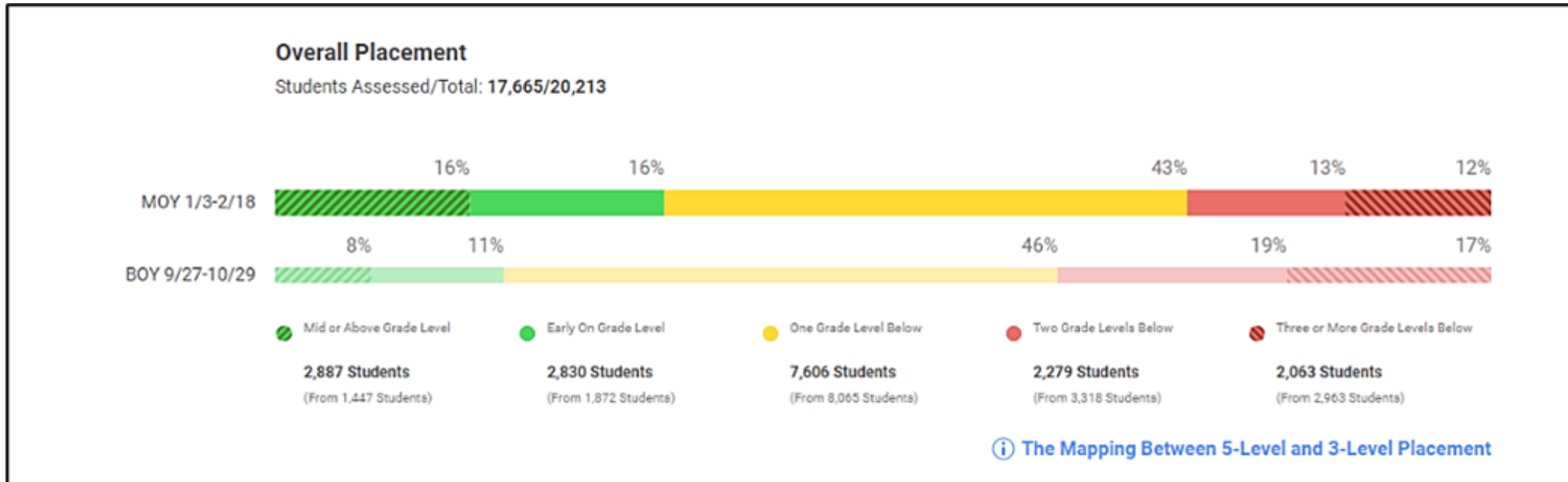
DESSA Data

As part of a district-wide focus on social and emotional needs, we are prioritizing the support of student wellness across the city. To do this we are implementing the DESSA, and giving educators access to Urban Assembly's Resilient Scholars Portal for guided intervention supports.

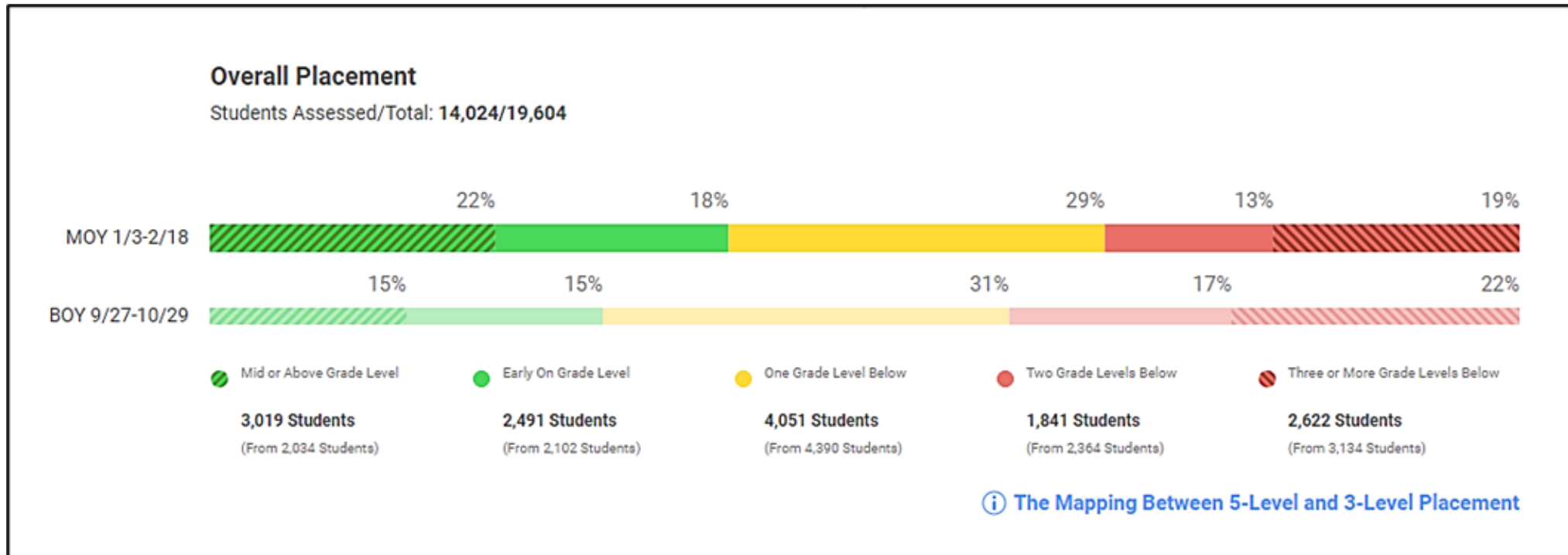
Our most recent data below is helping school leaders, teachers and related services staff identify and support positive social emotional learning across our schools.



Our Assessment Gains: Math



Our Assessment Gains: ELA



Central Updates

2022 NYC School Survey: Available in NYCSA

The 2022 NYC School Survey is now open through **March 25**, and will give families, students in grades 6–12, teachers, and select support staff the opportunity to provide schools with feedback that will help them reflect on the past year and understand the needs of their communities.

NYS ELA/Math Exam Administration
The New York State (NYS) grades 3–8 English Language Arts (ELA) and math exams will be administered from (ELA) **March 29–30** and (MATH) **April 26–27**

SLT Regulations
Open Meetings Law
Biennial Review Survey

DCEP Update – Is pending final review and will be *shareable* soon.